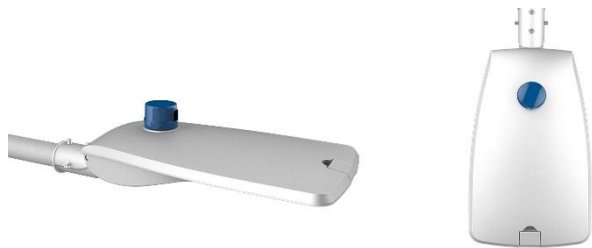




ORENOQUE Product range





Description

Designed for urban lighting, the ORENOQUE range luminaires offer a wide spectrum of possible powers (30W to 150W), being particularly suitable for various outdoor environments, such as streets, avenues, squares, parking lots or residential areas.

Their aerodynamics promote excellent air circulation and ensure efficient and homogeneous heat dissipation, while the opening of the hood from the top allows better accessibility to the luminaire for carrying out maintenance operations.

Each luminaire in this range achieves a very efficient level of luminous efficiency of 130 lm/W, thereby reducing energy consumption and allowing excellent visual comfort. Each one of them is composed of high intensity LEDs supplied by the company Nichia SMD which offer multiple possibilities of orientation of the luminous flux. They can also be equipped with a communication node and thus become programmable and communicating. Their supervision is then ensured remotely.

Main features

- High light efficiency (130 lm/W)
- Wide range of powers and optics (30W – 150W)
- Excellent visual comfort
- IP66
- Programmable and communicating

Applications

- Major urban traffic arteries
- Residential areas
- Pedestrian and cycling paths
- Parking
- Railway platform



ORENOQUE

Models - Features	ORE-030	ORE-050	ORE-070	ORE-090	ORE-120	ORE-150
Power (Watts)	30W	50W	70W	90W	120W	150W
Luminous Flux (Lumens)	3900 lm	6500 lm	9100 lm	11700 lm	15600 lm	18750 lm
Light Efficiency (Lumens / Watt)	130 lm/W					
Light Source	LED modules Leds Nichia SMD					
Color temperature CCT (K)	4000K (3000K & 5000K optional)					
Color Rendering Index (CRI)	Ra>70 Ra>80 (optional)					
LED Life Span	>50 000 hours Ta=30°C @L70					
Operating Temperature	-30°C / +50°C					
Relative Humidity	15%~90%RH					
Power Factor	> 0,90			> 0,95		
Driver	Constant Courant (CC)					
Electrical data	Class II AC100-240V / AC100-277V Surge protection: 10KV					
Dimming	Dali 1-10V					
Materials	Housing : Aluminum					
Protection	IP66 / IK09 Protection of optics and LEDs by tempered glass Presence of a vent to avoid the effects of condensation inside the sealed chamber					
Color	Grey (RAL9006)					
Warranty	5 years					
Weight (Kg)	6,5 Kg	6,5 Kg	6,8 Kg	6,8 Kg	9,2 Kg	9,2 Kg
Dimensions	613x222x159 mm		680x282x160mm		763x352x225mm	
Certifications	CE, CB, ENEC, Rohs,					
Options	Daylight sensor Motion sensor Wireless Remote control NEMA or ZHAGA communication module with specific SR/DX driver					





Mounting & Maintenance



Opening the luminaire cover is easy with one hand



The cover opening angle gives wide access to the interior of the luminaire allowing the operator to carry out maintenance operations with ease



A circuit breaker cuts off the power supply as soon as the luminaire cover is opened, allowing the operator to work safely



Maintaining the opening of the cover is ensured and secured by a self-locking rod



NEMA / ZHAGA Receptacles

ORENOQUE luminaires are fitted with a Nema or Zhaga receptacle to make these luminaires programmable and communicating.

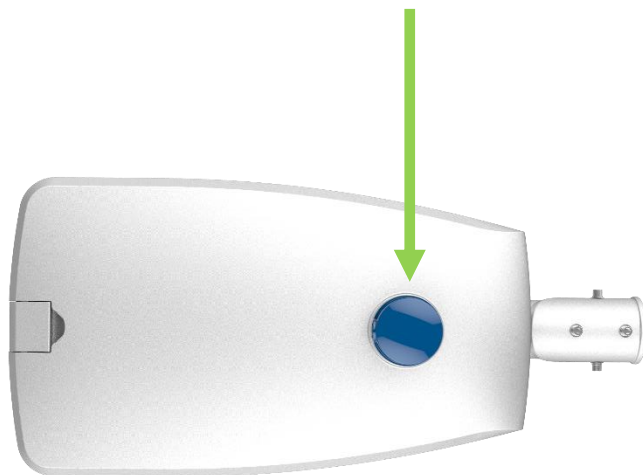
NEMA Receptacle



ZHAGA Receptacle



NEMA or ZHAGA receptacles provide a sealed (waterproof) electrical connection between the inside and the outside of the fixture. The receptacle is screwed onto the upper part of the luminaire.





Head Office

Pépinière d'éco entreprises
Rue de Bourgogne
62750 Loos-en-Gohelle
France

Marseille offices

SWEN Parc
Building D1 – Hall D3
Impasse du Paradou
13009 Marseille
France
Phone number: +33 (0)4 91 72 31 37

Contact

E-mail: contact@witti.fr



CONNECTED LIGHTS

CONNECTED THINGS